

CZT

SPECIFICATION FOR APPROVAL

CUSTOMER _____

CUSTOMER'S PART NO. _____ REV. _____

DESCRIPTION RJ45 ICM (10/100 Base-T 1 Port)

CZT'S PART NO. JDFU10370615 REV. A

CZT OLD P/N _____

ISSUE NO. 11B-195

ISSUE DATE Jul.27,2011

☐ APPROVED

☐ REJECTED:

☐ APPROVED UNDER
THE CONDITIONS:

SuZhou Yihua Communicated Connector Co., Ltd.

**Add: No.1558, Linhu East Road, Foho New&Hi-tech industrial Development Zone ,
Wujiang, Jiangsu, P.R.C.**

TEL:+86-512-82078810

FAX:+86-512-82078858

DongGuan Yihua Electronic Co., Ltd.

Add: Yihua Holdings Industrial park, Cuntou district, Hu'men Town,

TEL:+86- 769-8624 0111

FAX:+86-769-8624 0238

Note:

- 1. This specification is the proprietary of Yihua Communicated Connector Co., Ltd. and is not allowed to be revealed to third party without any written approval .**
- 2. This specification is valid within 1 year before approval, and for any updated specification information required, please contact with CZT's sales window before order releases.**

SPECIFICATION FOR APPROVAL

Customer Part No.:
CZT Part No.: JDFU10370615
Part Name: RJ45 ICM (10/100 Base-T 1 Port)

Page 2 of 6

CZT

SPECIFICATION FOR APPROVAL

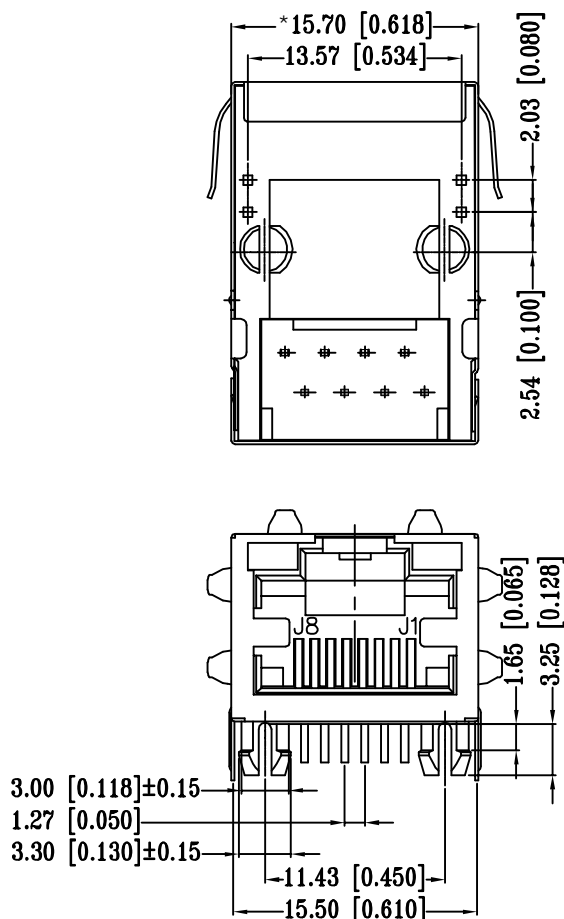
Customer Part No.:
CZT Part No.: JDFU10370615
Part Name: RJ45 ICM (10/100 Base-T 1 Port)

Rev.: A

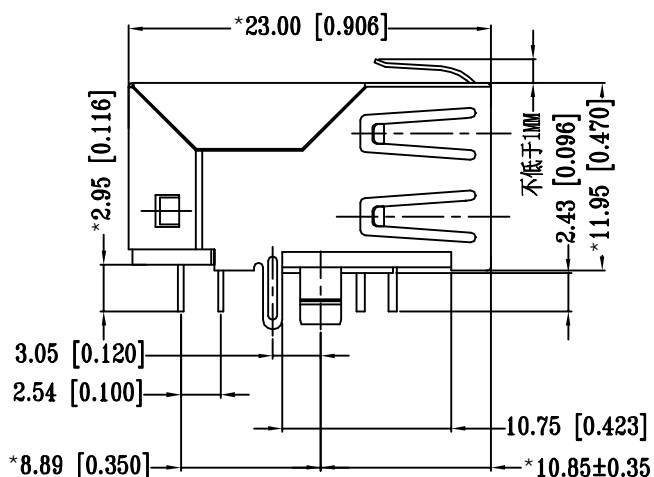


4. Mechanical Dimension and Notes:

4-1. Mechanical Dimension:



Unless otherwise specified, all dimensions tolerances is $\pm 0.254 / 0.010$.



4-2. Notes:

- CONNECTOR MATERIAL:
HOUSING: THERMOPLASTIC UL94 V-0
SHIELD: Brass
SHIELD PLATING: NICKEL
CONTACT: COOPER ALLOY
CONTACT PLATING: SELECTIVE GOLD, 6 MICRO-INCHS MIN IN CONTACT AREA
- PIN NOT ELECTRICALLY CONNECTED MAYBE OMITTED SEE ELECTRICAL DRAWING FOR OMITTED PINS
- RJ45 CAVITIES CONFORM TO FCC RULES AND REGULATION PART 68.
- THE PART IS RECOMMENDED FOR WAVE SOLDERING PROCESS PEAK SOLDERING TEMPERATURE IS 260°C MAX, 10 SECS MAX
- OPERATING TEMPERATURE $T=0^{\circ}\text{C}$ TO $+70^{\circ}\text{C}$.
- STORAGE TEMPERATURE $T=-40^{\circ}\text{C}$ TO $+85^{\circ}\text{C}$.
- ALL CRITICAL DIMENSIONS WITH "**"

Drawn by

Designed by

Approved by

CZT

SPECIFICATION FOR APPROVAL

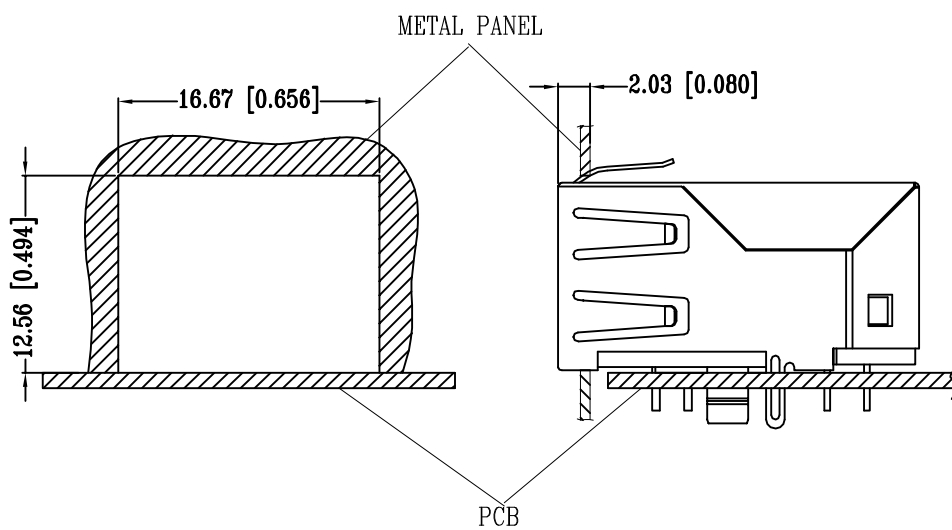
Customer Part No.:
CZT Part No.: JDFU10370615
Part Name: RJ45 ICM (10/100 Base-T 1 Port)

Rev.: A



5. Label and Recommended PWB Layout and Suggested Panel Opening:

5-1. Suggested Panel Opening:



UNIT: mm / inch
Tolerances: ± 0.10 / 0.004

REFERENCE ONLY

CZT

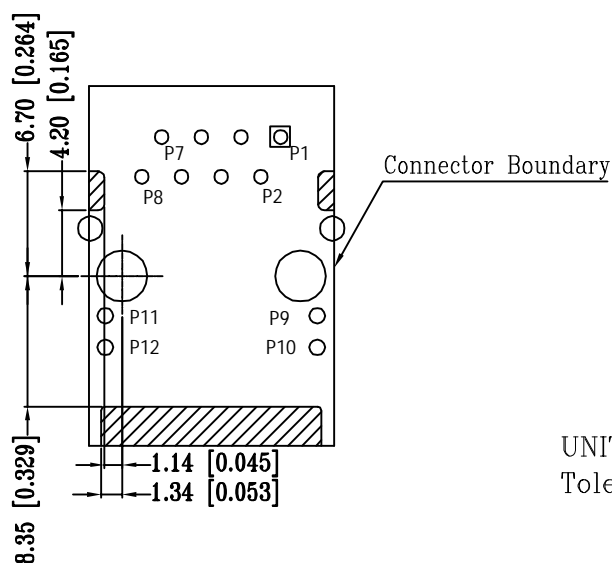
SPECIFICATION FOR APPROVAL

Customer Part No.:
 CZT Part No.: JDFU10370615
 Part Name: RJ45 ICM (10/100 Base-T 1 Port)

Rev.: A

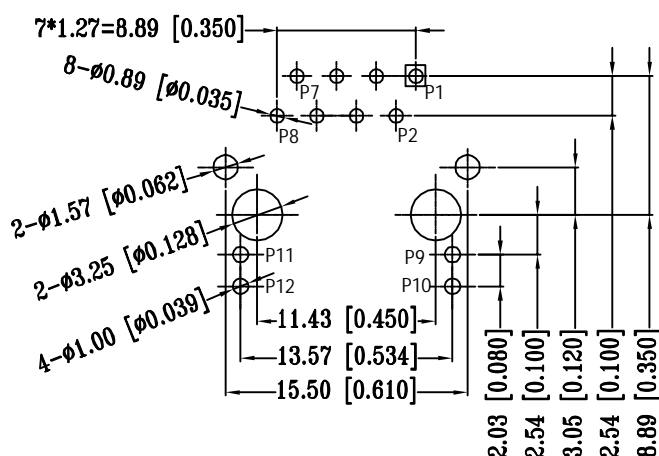


5-2. Keep-Out Area (Component Side View):



UNIT: mm / inch
 Tolerances: ± 0.10 / 0.004

5-3. Recommended PWB Layout (Component Side View):



UNIT: mm / inch
 Tolerances: ± 0.10 / 0.004

CZT

SPECIFICATION FOR APPROVAL

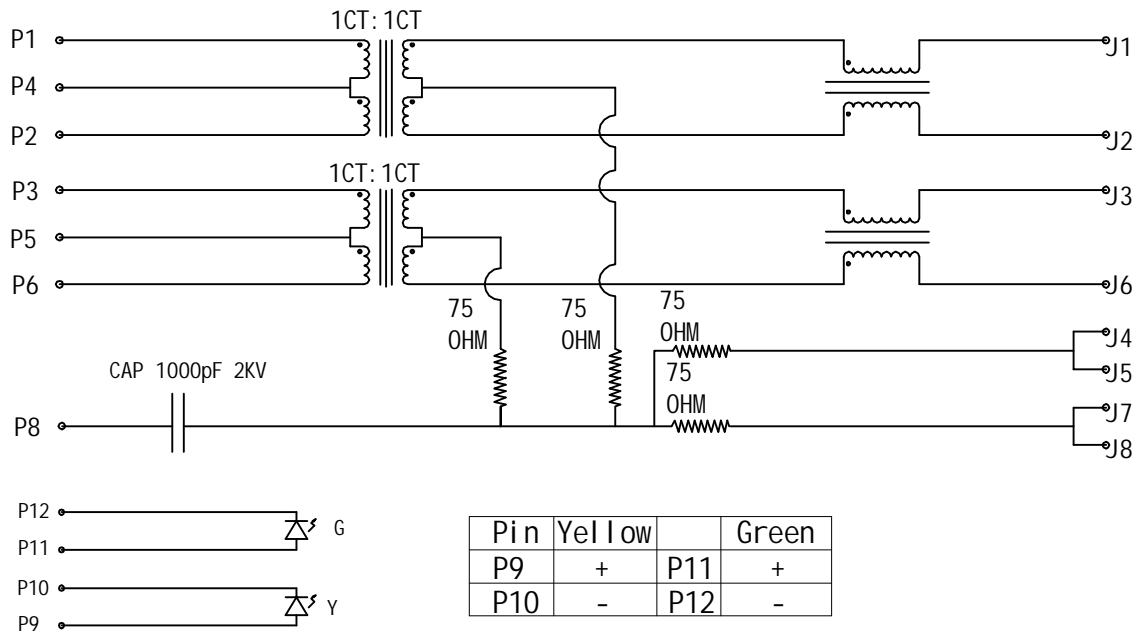
Customer Part No.:
CZT Part No.: JDFU10370615
Part Name: RJ45 ICM (10/100 Base-T 1 Port)

Rev.: A



6. Circuit Schematic and Electronical Specifications:

6-1. Circuit Schematic:



6-2. Electronical Specifications:

- | | | | |
|-----|------------------------------------|--------------------------|--------------------------|
| 1.0 | Turn Ratio @100KHz: | (P1~P2):(J1~J2) = 1:1±5% | |
| | | (P3~P6):(J3~J6) = 1:1±5% | |
| 2.0 | Primary Inductance: | 350uH MIN | @100KHZ,0.1V 8mA DC BIAS |
| 3.0 | DC Resistance:(J1~J2):(J3~J6) | 1.2 OHMS MAX | |
| 4.0 | Insertion Loss: | 1-100MHz | -1.2dB MAX |
| 5.0 | Return Loss: | 1-30MHz | -16dB MIN |
| | | 30-60MHz | -12dB MIN |
| | | 60-80MHz | -10dB MIN |
| 6.0 | CROSS TALK: | 1-100MHz | -30dB MIN |
| 7.0 | COMMON TO COMMON MODE ATTENUATION: | 1-100MHz | -30dB MIN |
| 8.0 | Isolation: PHY Side to Line Side: | 1500VAC or 2250VDC | |